



pearson  
ferrier®



6 LIMWOOD CLOSE  
Helmshore, BB4 4HZ  
£460,000



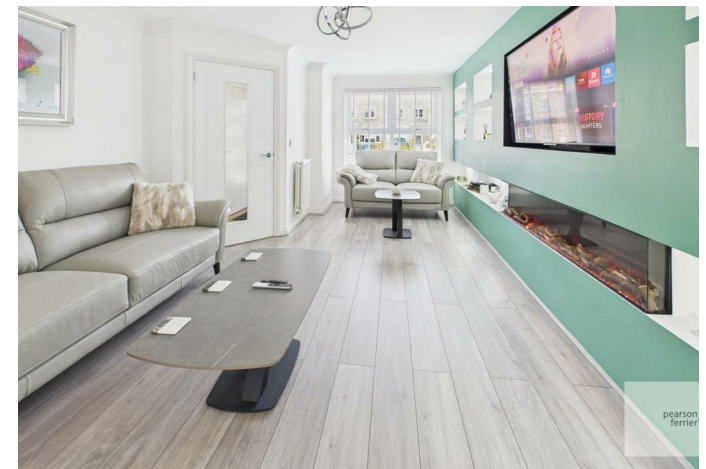
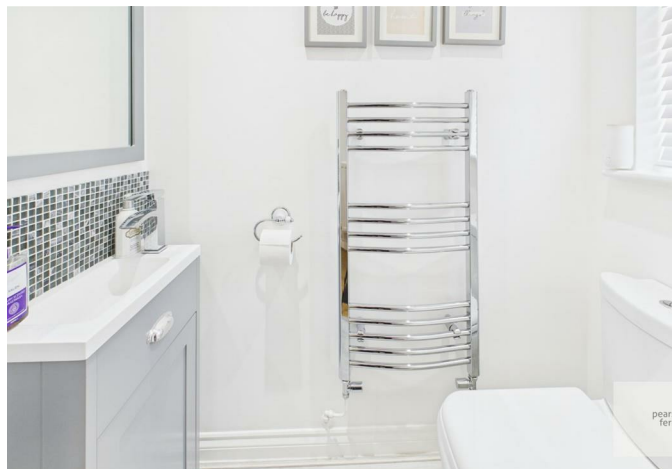
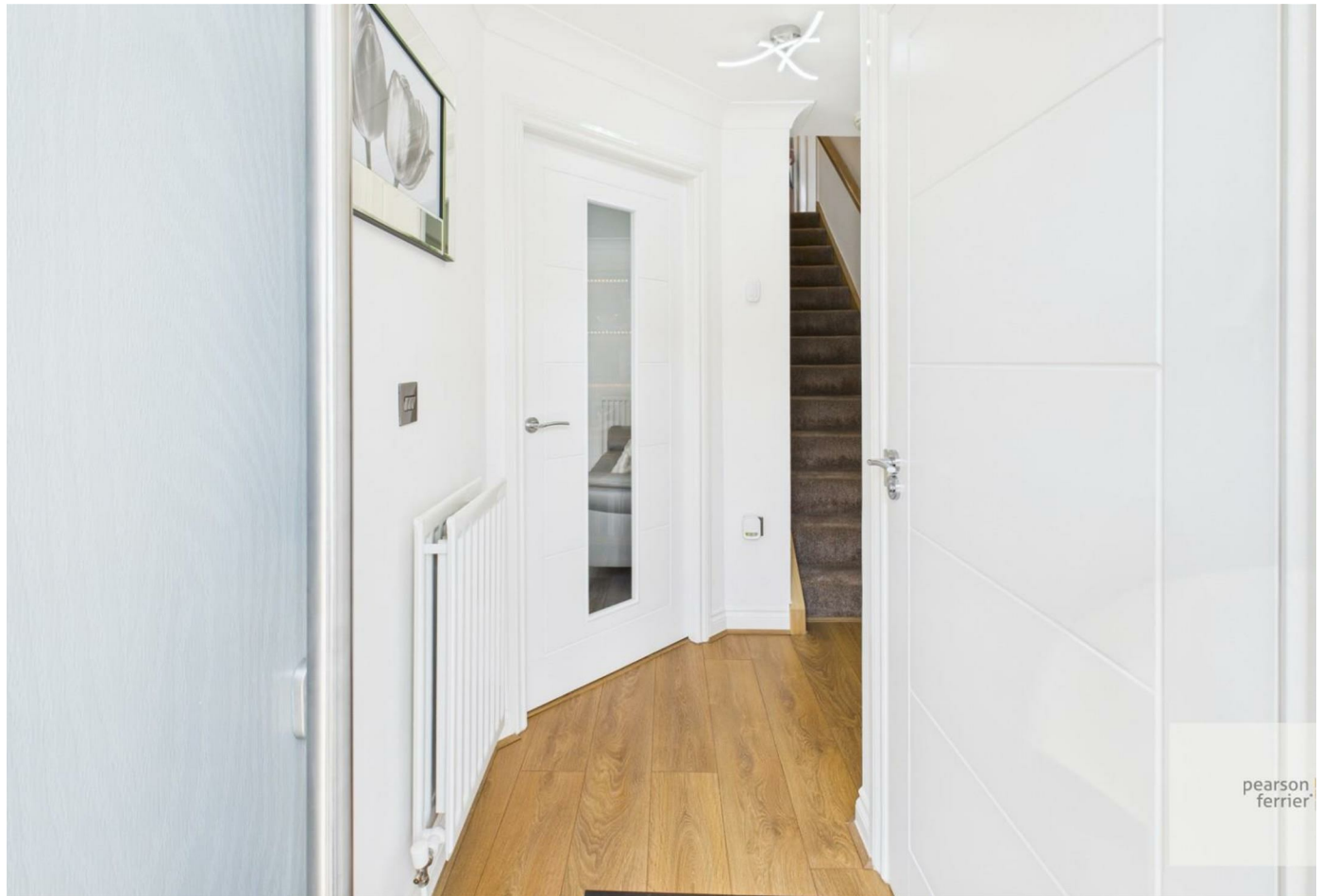
## 6 LIMWOOD CLOSE

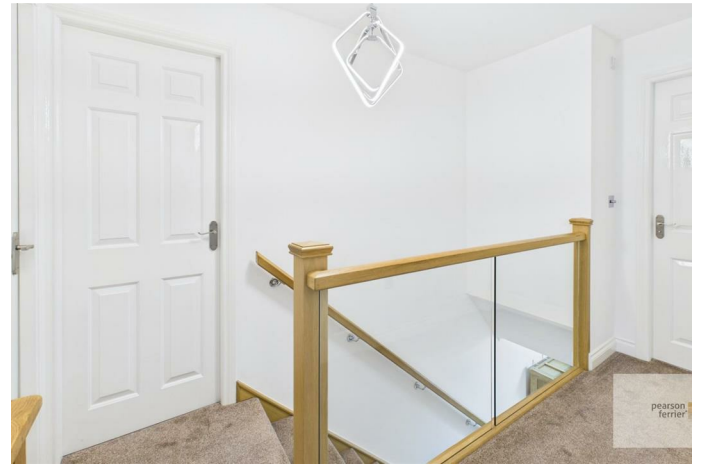
### Property at a glance

- modern detached house
- four bedrooms main ensuite
- newly renovated
- superbly renovated
- good m-way access
- parking, garage & gardens

Limewood Close, Helmsore is a beautifully presented, and recently renovated, four bedroom modern detached house, located on this popular residential development. The house is within easy reach of local shops, schools and amenities and is a short drive to nearby Rawtenstall and Ramsbottom centres and a short drive to the motorway network. The house has a stylish and contemporary interior, benefits from gas fired central heating and is double glazed, the accommodation briefly comprises; entrance hall with guests wc/cloaks, living room with feature media wall, dining room, kitchen, conservatory and utility room, first floor, four bedrooms the main fitted and ensuite and an additional bathroom. Outside there is a garden forecourt and driveway leading to an integral garage, to the rear there are well presented and enclosed walled gardens with paved patio and raised lawn and flower beds.

Freehold Property/Council Tax Band E







Floor 0



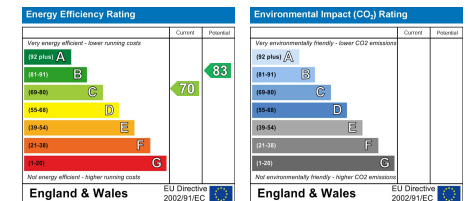
Floor 1

Approximate total area<sup>m</sup>  
110.1 m<sup>2</sup>

(1) Excluding balconies and terraces

Calculations reference the RICS IPMS 3C standard. Measurements are approximate and not to scale. This floor plan is intended for illustration only.

GIRAFFE360



Ramsbottom Office  
11 Bolton Street, Ramsbottom, BL0 9HU  
Telephone: 01706 822630  
Fax: #  
Email: ramsbottom@pearsonferrier.co.uk

[www.pearsonferrier.co.uk](http://www.pearsonferrier.co.uk)



All statements contained in these particulars are for indicative purposes only and are made without responsibility on the part of Pearson Ferrier and the vendors of this property and are not to be relied on as statements or representations of fact. Potential purchasers should satisfy themselves by inspection or otherwise as to the accuracy of such details contained in these particulars.